

Marie Skłodowska-Curie actions -COFUND-

Sesión informativa
Convocatoria MSCA COFUND
Madrid



Alan Craig
Research Executive Agency
2nd June 2016

H2020 priorities



Excellent Science - *Priority I*

- ✓ European Research Council
- ✓ Future and Emerging Technologies
- ✓ Marie Skłodowska-Curie Actions
- ✓ Research Infrastructures

Industrial leadership - *Priority II*

- ✓ Leadership in enabling and industrial technologies
- ✓ Access to risk finance
- ✓ Innovation in SMEs

Societal challenges - *Priority III*

- ✓ Health, demographic change and wellbeing
- ✓ Food security, sustainable agriculture, marine and maritime research, bio-economy
- ✓ Secure, clean and efficient energy
- ✓ Smart, green and integrated transport
- ✓ Climate action, resource efficiency and raw materials
- ✓ Inclusive, innovative and reflective societies
- ✓ Security

MSCA



MSCA Objective

Ensure the optimum development and dynamic use of Europe's intellectual capital in order to generate new skills, knowledge and innovation

Budget 2014-2020: 6 162 million €

Strategic programming approach



- Attract and retain **research talent**
- Develop state-of-the-art, **innovative training schemes**, consistent with the highly competitive and increasingly inter-disciplinary requirements of research and innovation
- Promote sustainable **career development** in research and innovation
- Focus on **delivering new knowledge and skills**, in line with the key driver identified in the strategic programming approach
- Contribute to a **strong partnership with MS** via the co-funding mechanism

Key features



- Open to all domains of **research and innovation** from basic research up to market take-up and innovation services
- Entirely **bottom-up**
- Participation of **non-academic sector** strongly encouraged, especially industry and SMEs
- **Mobility** as the key requirement - funding on condition participants move from one country to another
- (Almost) no nationality conditions
- Promotion of attractive **working and employment conditions**
- Particular attention to **gender** balance
- **Public engagement** of supported researchers
- Annual calls (except for NIGHT – biennial)



MSCA to foster excellence throughout Europe

Objective

- ✓ stimulate regional, national or international programmes to foster excellence in researchers' training, mobility and career development

Scope

- ✓ international, intersectoral and interdisciplinary **research training**, as well as transnational and cross-sector **mobility** of researchers at all stages of their career
- ✓ Possibilities of synergies with structural funds
- ✓ Opportunities for **researchers from all countries**
- ✓ Researchers to comply with the mobility rules of the MSCA
- ✓ Open and transparent recruitment, vacancies widely publicised

Expected Impact

- ✓ exploit synergies between European Union actions and those at regional, national, and international level
- ✓ leverage funding and combat fragmentation



- ✓ Mono-beneficiary
- ✓ Legal entities (public and private) established in MS or AC and international European interest organisations



**Doctoral
Programmes**



**Fellowship
Programmes**

COFUND – Main features



- ✓ **Budget:** € 80 Million in 2016 (Doctoral Programmes: 30 Mio)
- ✓ Maximum **€ 10 Million per single applicant** per call
- ✓ Duration of projects: minimum 3 years, maximum 5 years (including the time taken to publish calls and recruit researchers)
- ✓ **Fellowships: minimum 3 months**
- ✓ EU contribution to cover **living allowances for researchers and management costs**
- ✓ Minimum living allowance fixed in the WP

COFUND – Main features



- ✓ Each single application must only address the doctoral or fellowship programme, but
- ✓ More than one application can be submitted
- ✓ Recruited researchers must respect the same mobility rule as IF (for the fellowship programme) or ITN (for the doctoral programme). Existing programmes can continue with own mobility rule if well-justified.
- ✓ Unless prohibited by national legislation all fellows, including doctoral fellows, must be recruited on a work contract.
- ✓ In the doctoral programme all fellows must be registered for a PhD



Synergies with European Structural and Investment Funds (ESIF)

- ✓ Support regional policies by internationalisation of human resources in research
- ✓ Possibility to support programmes that prioritise specific scientific disciplines based on smart specialisation strategies
- ✓ Cost items other than living allowance and management (such as research costs, travel and mobility allowances, overheads) may be funded through other resources including EU programmes other than Horizon 2020 (e.g. ESIF)

Synergies with ESIF



(European Structural
and Investment Funds)

- ✓ Support regional policies by **internationalisation of human resources in research**
- ✓ Programmes that prioritise specific scientific disciplines based on smart specialisation strategies (**RIS3**) may also be supported
- ✓ Other cost items other than living allowance and management (such as research costs, travel and mobility allowances, overheads) may be funded through other **resources including EU programmes other than Horizon 2020 (e.g. ESIF)**

Synergies with ESIF



Guide on synergies:

- ESIF
- COFUND
- other EU programmes for R&I & Competitiveness



Enabling synergies between European Structural
and Investment Funds, Horizon 2020
and other research, innovation and
competitiveness-related Union programmes

Guidance for policy-makers and implementing bodies



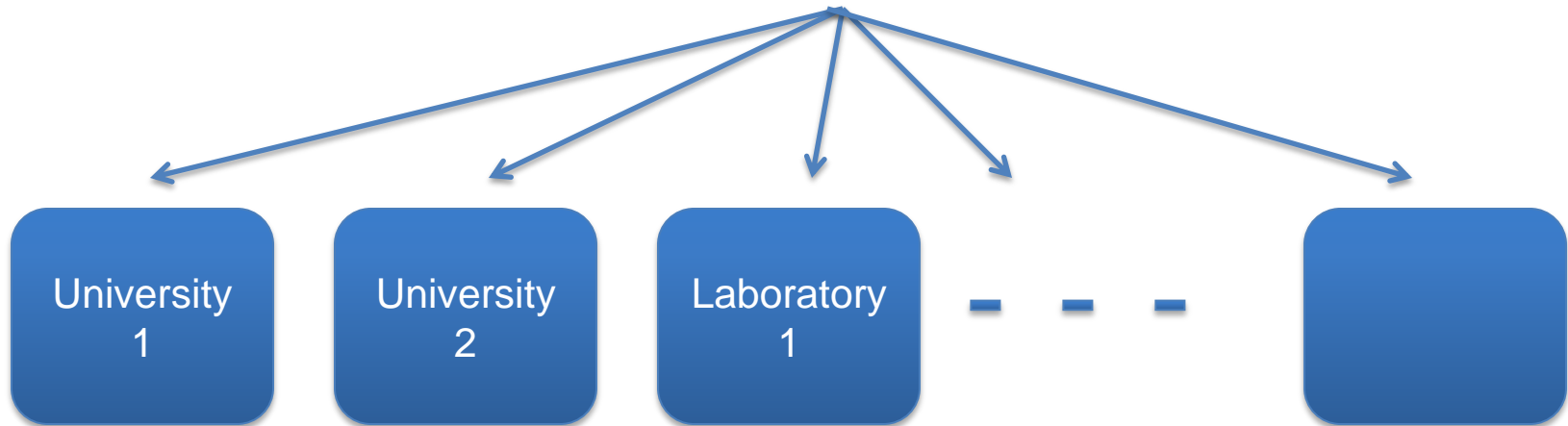
Regional and
Urban Policy

http://ec.europa.eu/regional_policy/sources/docgener/guides/synergy/synergies_en.pdf

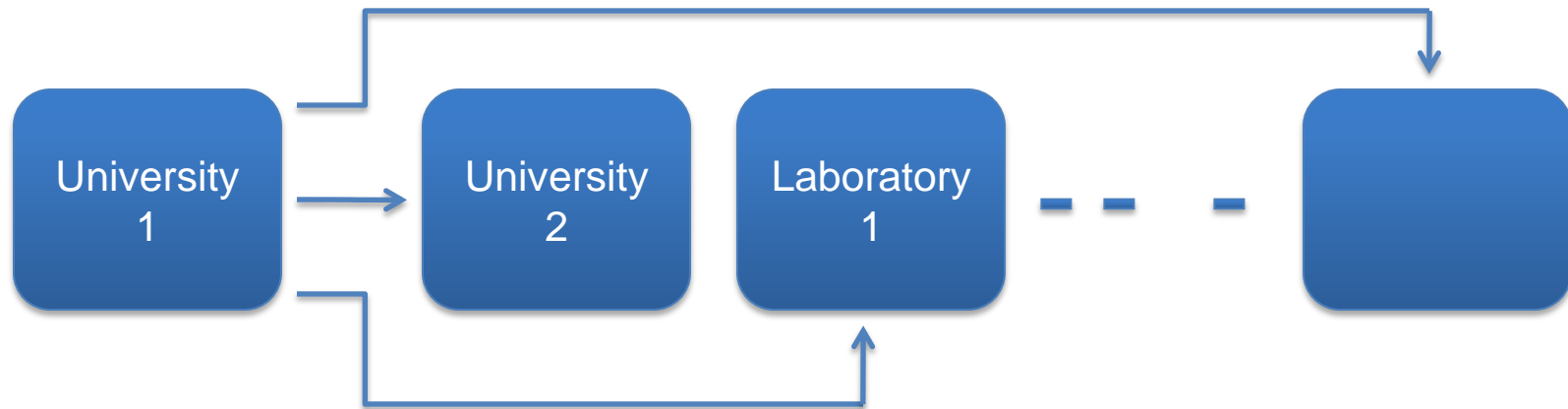
COFUND – Possible structures 1 Hierarchical



Research Funding Organisation



COFUND – Possible structures 2 Horizontal



COFUND – Possible structures 3 Single Point



We do everything!

Award criteria: COFUND



European
Commission

Excellence (50%)	Impact (30%)	Quality and efficiency of the implementation (20%)
Quality of the selection / recruitment process for the researchers (transparency, composition and organisation of selection committees, evaluation criteria, equal opportunities)	Enhancing the potential and future career perspectives of researchers; Strengthening human resources on regional, national or international level	Coherence, effectiveness and appropriateness of the work plan
Quality of the research options offered by the programme in terms of science, interdisciplinarity, intersectorality and level of transnational mobility	Aligning practices of participating organisations with the principles set out by the EU for human resources development in research and innovation	Appointment conditions of researchers
Quality of career guidance and training , including supervision arrangements, training in transferable skills	Quality of the proposed measures to exploit and disseminate the results	Competence of the participant to implement the programme
	Quality of the proposed measures to communicate the results to different target audiences	

COFUND – EU contribution



- ✓ EU contribution to **living allowance** for contracts with full social security:
 - Early stage researchers (ESR): € 1855 per person-month
 - Experienced researchers (ER): € 2625 per person-month
- ✓ EU contribution to **management costs**: € 325 per person-month

Example (Fellowship programme – ER)

Cost item	Total cost [€ per person-month]	EU contribution [€ per person-month]
Living allowance	4800	2625
Mobility allowance	500	
Research costs	500	
Management costs	600	325
Indirect costs	600	
Total	7000	2950

✓ Minimum amounts for monthly living + mobility allowances:

- ESR: € 2597
- ER: € 3675

✓ Other cost items may be funded through other resources (including ESIF funds)



To put the previous example in another way:

- The **living allowance and management costs** are 5400 EUR and the EU contributes 2950 EUR to this
- The remaining 2450 EUR in this category can come from any source, except EU funding.
- The **mobility, research and indirect costs** are 1600 EUR and these can come from any source except H2020 (but including ESIF)



NB – in the exceptional case where fellows are recruited on a stipend the EU COFUND contribution is further halved



Quite simply –we have one single cost category:

- The researcher month is the cost that is reported and paid
- Typically for a 5-year programme there is
 - 50% prefinancing (based on estimated number of researchers)
 - After two years (first reporting period) we pay for all the researcher months that have taken place
 - At the end of the fifth year (second reporting period) we pay for the balance.



NB – in the exceptional case where fellows are recruited on a stipend the EU COFUND contribution is further halved

COFUND 2014 Call



a few numbers

Success
Rate
 $\approx 25\%$

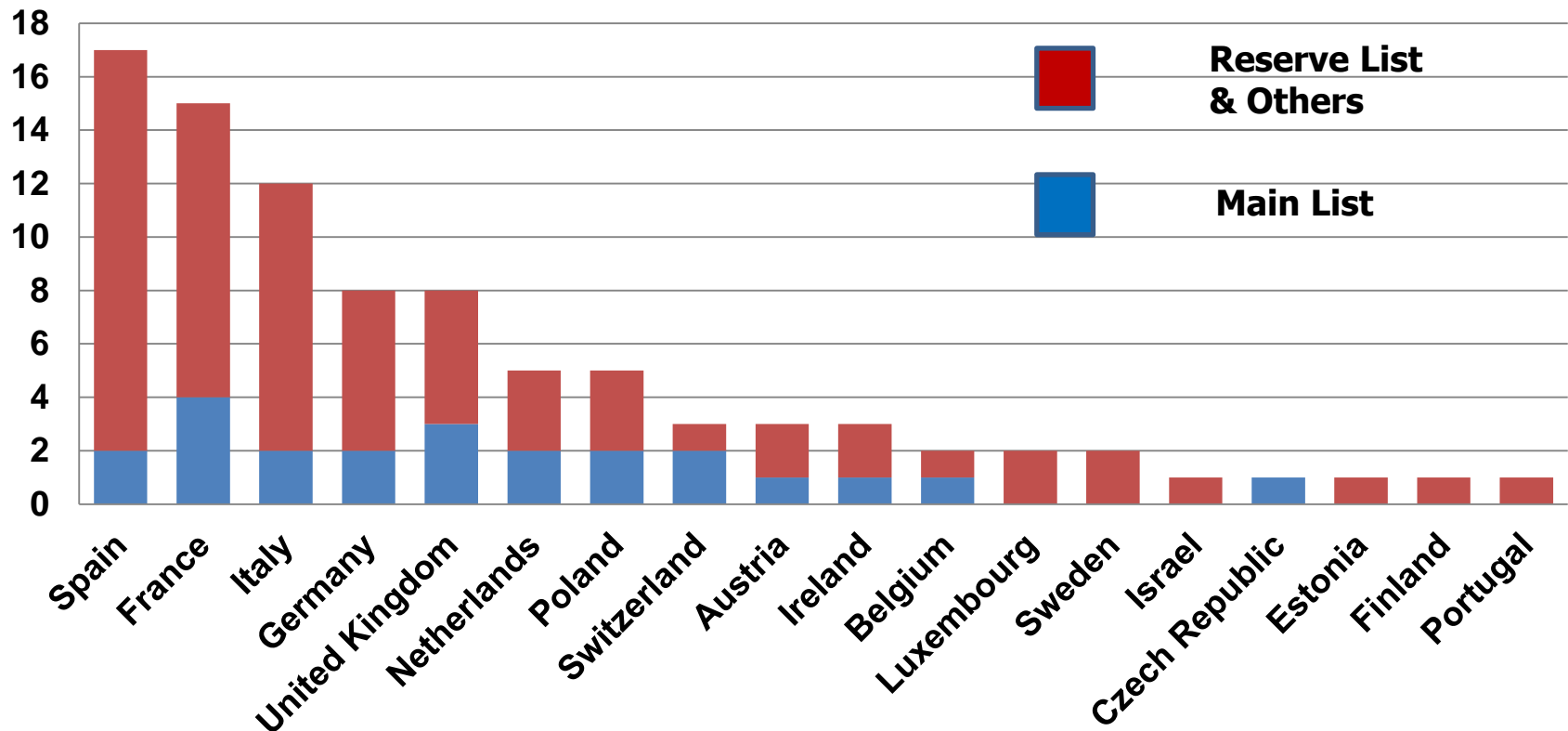
- **101 proposals Received (DP=49 ; FP=52)**
- **90 proposals Evaluated (DP=43; FP=47)**
- **66 proposals Above Threshold (DP=31; FP=35)**
- **23 proposals on Main List (DP=11; FP=12)**

COFUND 2014 Call



a few numbers

Total number of COFUND proposals evaluated per country
DP & FP

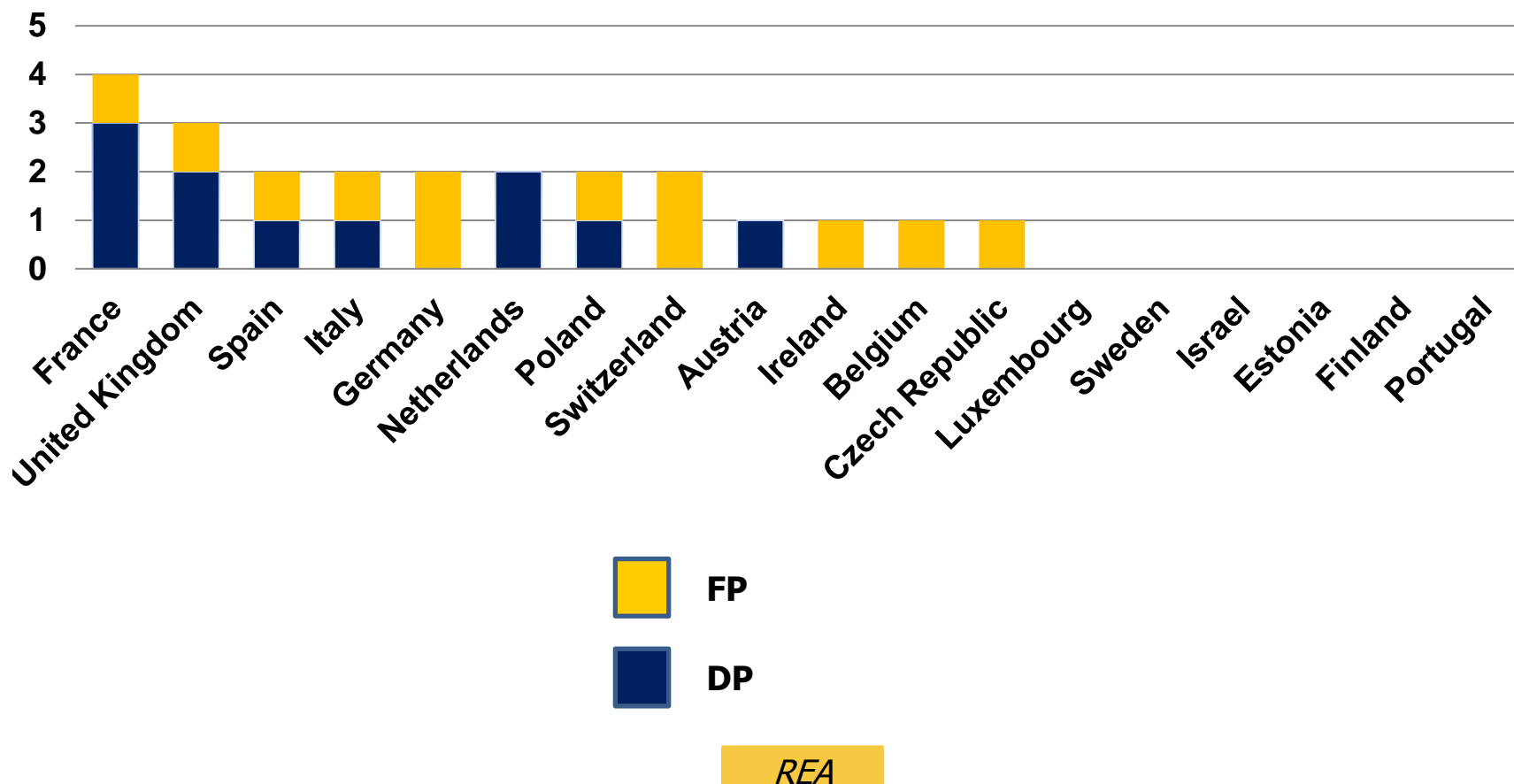


COFUND 2014 Call



a few numbers

**Number of COFUND proposals on the Main List for Funding
Distribution between DP and FP per country**

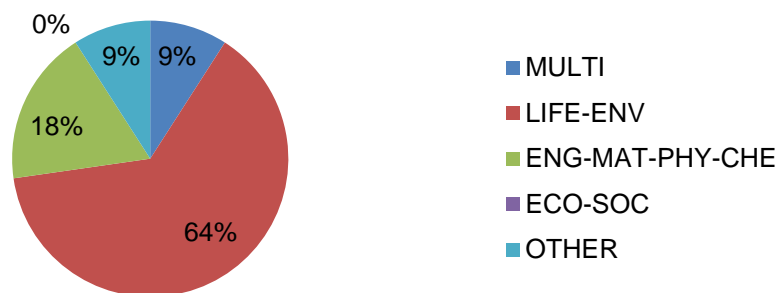


COFUND 2014 Call

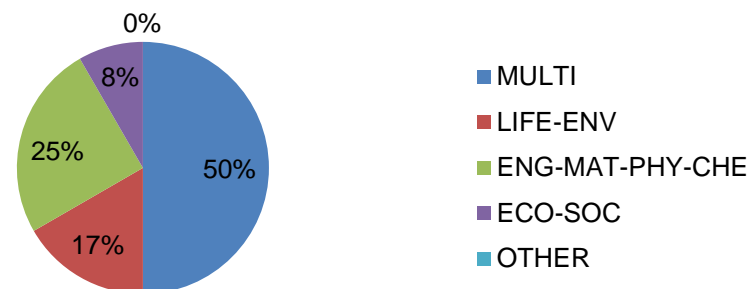


a few numbers

Frequency of the research areas
for the **doctoral proposals**
on the Main List



Frequency of the research areas
for the **fellowship proposals**
on the Main List

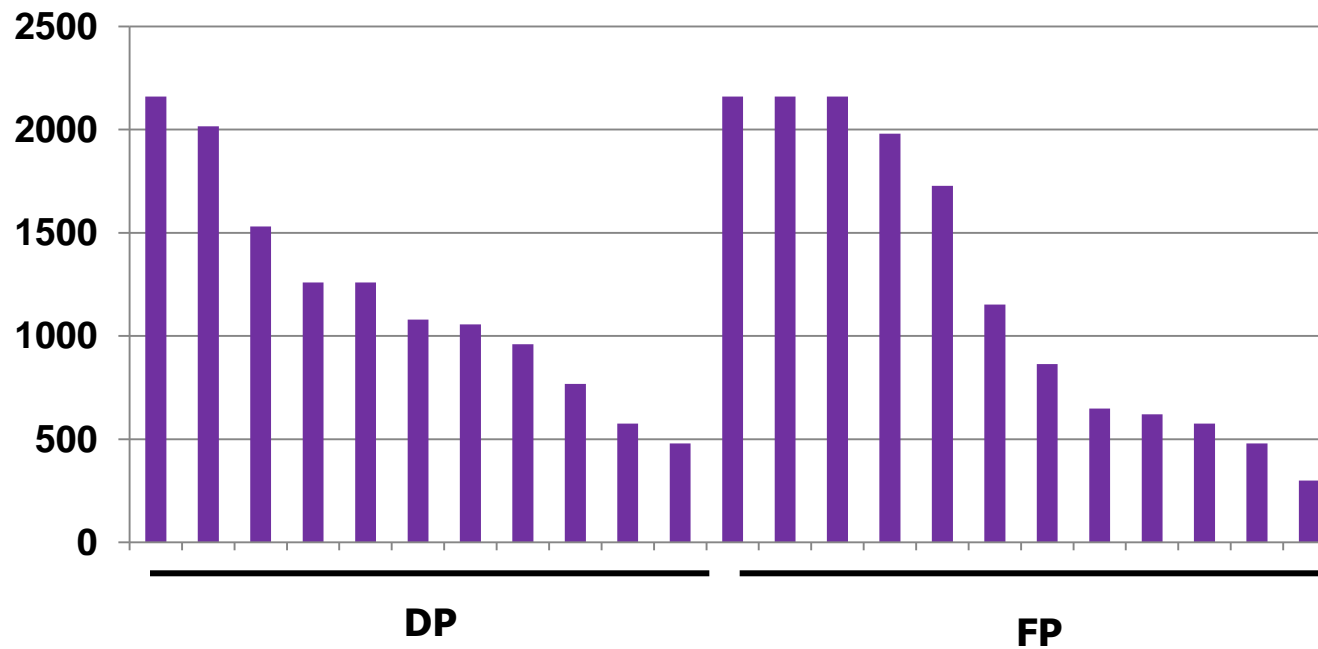


COFUND 2014 Call



a few numbers

**Number of person months for DP and FP proposals
on the Main List**

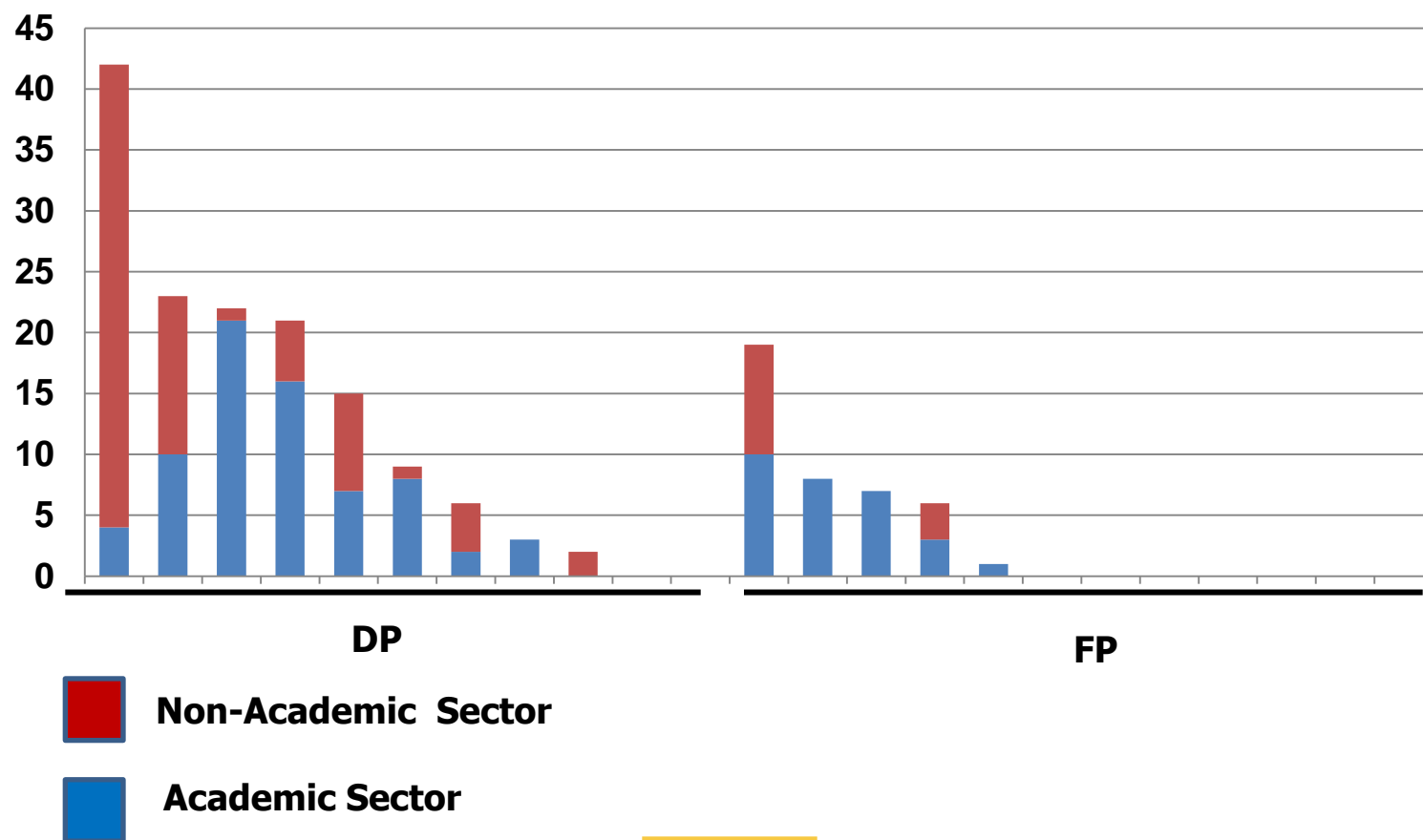


COFUND 2014 Call



a few numbers

Number of Partner Organisations and their sector for DP and FP proposals on the Main List

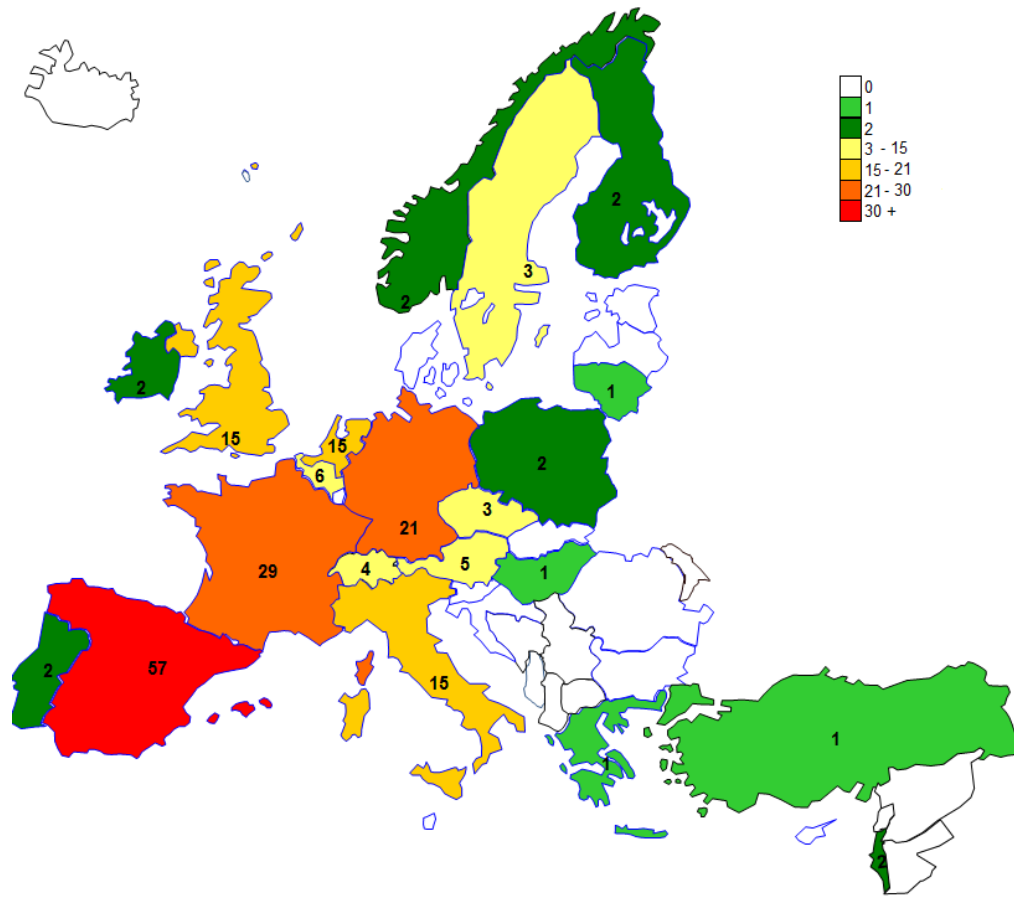


COFUND 2014 Call



a few numbers

Total number of **Partner Organisations** per MS and AC
listed in proposals from the Main List

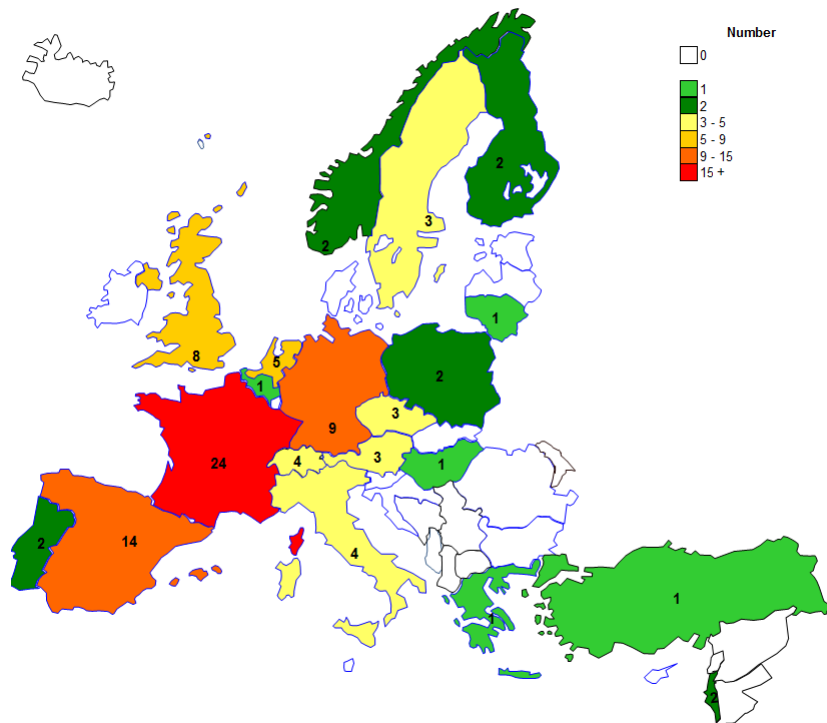


COFUND 2014 Call

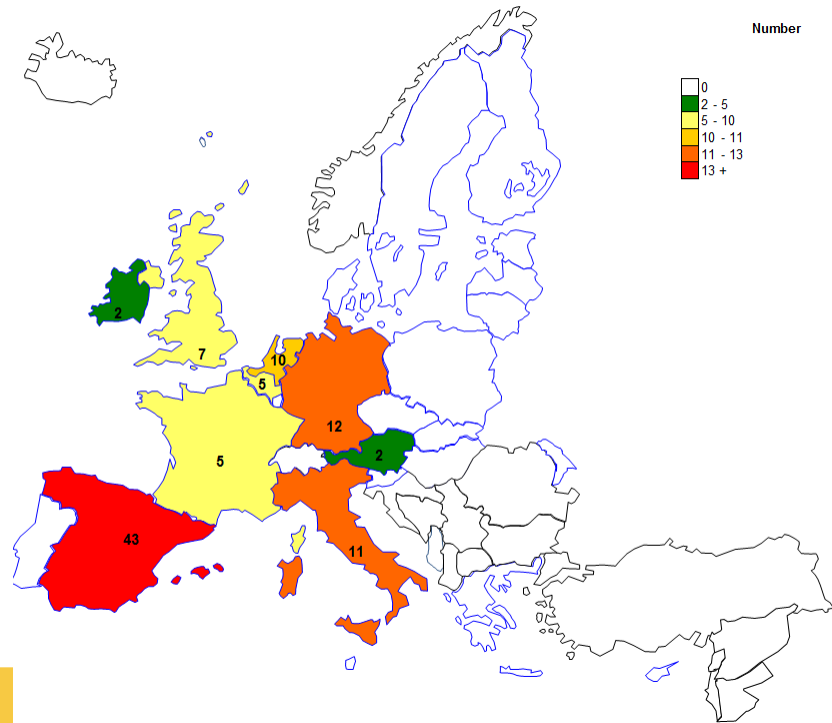


a few numbers

Total number of **ACADEMIC**
Partner Organisations
per MS and AC
in proposals from the Main List



Total number of **NON-ACADEMIC**
Partner Organisations
per MS and AC
in proposals from the Main List

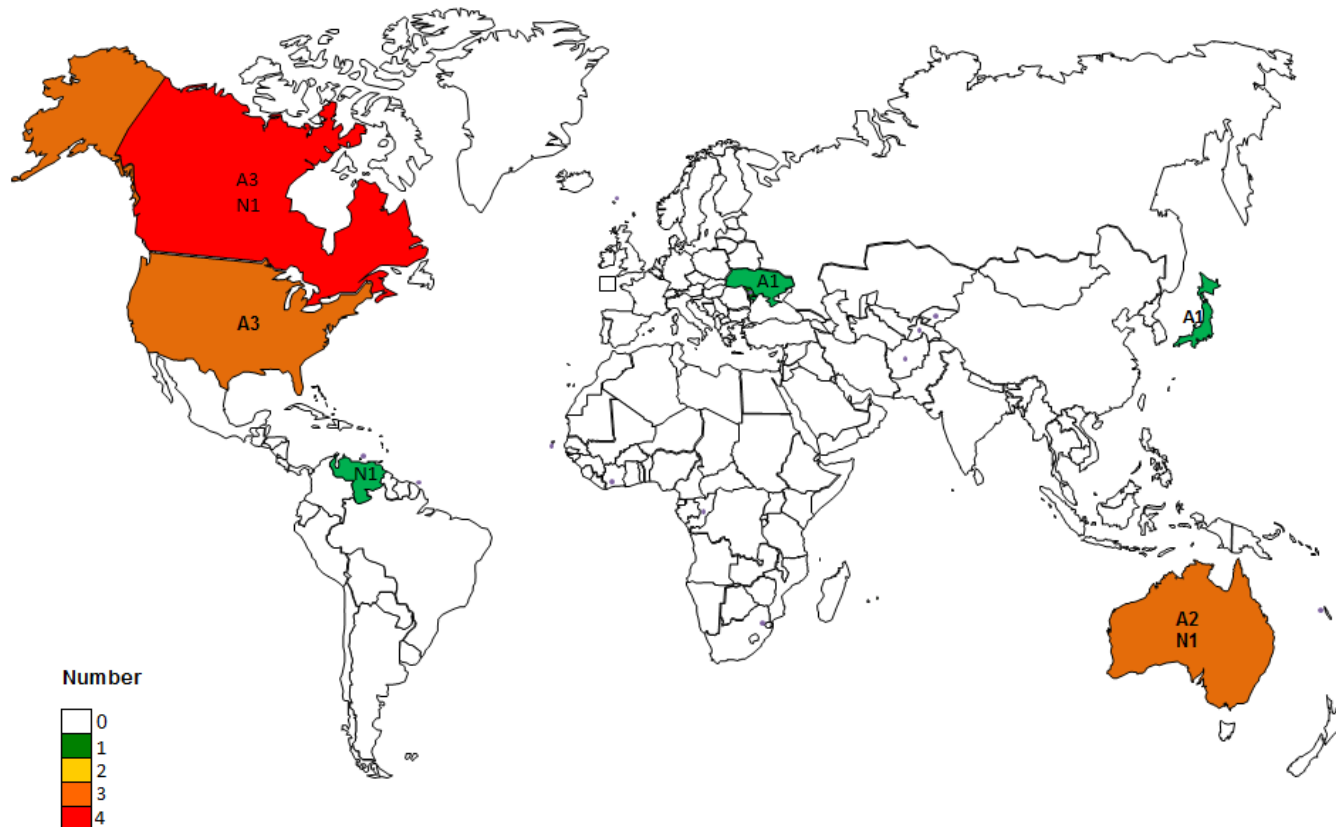


COFUND 2014 Call



a few numbers

Total number of **Partner Organisations** in TC
divided into academic (A) and non-academic (N)
listed in proposals from the Main List



Calls



Call	Opens - Closes	Budget
COFUND 2016	14/04/2016-29/09/2016	EUR 80 million
COFUND 2017	05/04/2017-28/09/2017	EUR 80 million

The IPR Helpdesk

can help you

European
Commission

The screenshot shows the European IPR Helpdesk website. At the top, there's a header with the European Commission logo and the text "EUROPEAN IPR HELPDESK" and "Get your ticket to innovation!". Below this is a navigation bar with a "quick search" box and several colored buttons: "services", "news", "events", "library", "training", "ambassador", and "helpline". The "library" section is highlighted. It contains a grid of links: "fact sheets", "newsletters", "bulletins", "frequently asked questions", "case studies", "IP matters of high interest", "useful documents", "links", and "glossary". To the right of the grid, there's a "follow us" section with social media icons and a "newsletter sign up here" button. Below the grid, there's an "upcoming" section with dates and topics, and an "other helpdesks" section listing regional helpdesks. At the bottom, there's a "Feedback on Newsletter and Publications" section and a footer with links like "about us", "website feedback", "project feedback", "why register?", "testimonials", "disclaimer", "privacy", and "copyright".

<https://www.iprhelphdesk.eu/>

EEN



can help you

European
Commission



ENTERPRISE EUROPE NETWORK

European Commission > Enterprise Europe Network > Services > Our services

Home

About

Services

Events


Success stories

News & Media

services



Share Success Stories

 [Success Stories Feed](#)

 [Embed Success Stories](#)

Services

[Going international](#)
[Technology](#)

Our services

Learn more about what we can do for your company in the following areas:

- [Going international](#)
- [Technology transfer](#)
- [Access to finance](#)
- [Research funding](#)
- [Advice on EU law and standards](#)
- [Intellectual property and patents](#)
- [Speak up on EU law](#)



Business Support on Your Doorstep

REA

<http://een.ec.europa.eu/>



Marie Skłodowska-Curie Actions Website

<http://ec.europa.eu/mariecurieactions>

Horizon 2020

<http://ec.europa.eu/research/horizon2020>

Participant Portal (applications)

<http://ec.europa.eu/research/participants/portal/page/home>

...or email

alan.craig@ec.europa.eu